

Rates by street address

Last updated: 10 Feb 2025 11:31am

The table below allows you to find rating information about properties on the Dunedin City Council rating information database.

19 Scoular Street Dunedin

Property Details

Property Details

Valuation number	27070-39000
Rate account ID	2024276
Property number	5024276
Property address	19 Scoular Street Dunedin
Certificate(s) of title	229/70

Current Rates

Future Rates

Rates Levied (2025)

Current Rates

The values on which the current rates are based are the valuations as at 1 July 2022 and remain in effect for rating purposes until 30 June 2026

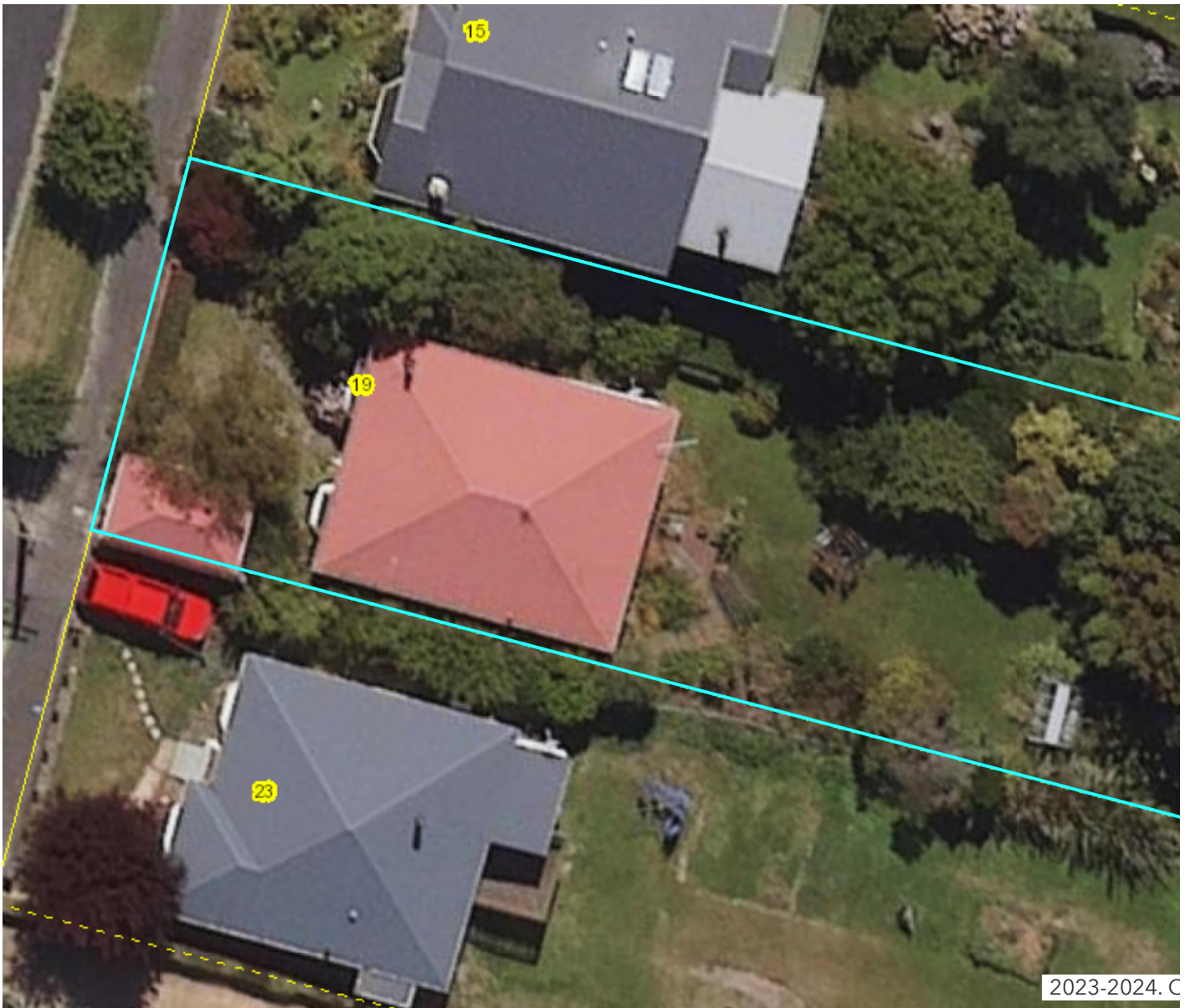
Current rating year	2025
Rating period	1 Jul 2024 to 30 Jun 2025
Rateability	Rateable
Rating differential	Area 2 - Residential
Land use	Residential : Single Unit excluding bach
Legal description	LOT 56 DP 2402
Area in hectares	0.0766
Value of improvements (01/07/22)	165,000
Land value (01/07/22)	375,000
Capital value (01/07/22)	540,000
Separately used or inhabited parts	1

To request a LIM for this property;

Please note down the valuation number displayed below then follow the instructions on the request a LIM page

[Search again](#)

[Request a LIM](#)



[Map this property](#) (opens a dynamic map viewer in new tab or window).

- [**Rates Information Details**](#)

This rate account information is recorded in the Rating Information Database (RID).

Capital and land values on this site are established by Quotable Value New Zealand Limited, solely for the purpose of levying rates.

[**Learn more about the General Revaluation.**](#)

Future Rates (this will show the new valuation).

The Dunedin City Council's landuse codes have been translated by the Council to a rating differential code.

- [**Disclaimer**](#)

The RID is regularly maintained and therefore is subject to ongoing change.

This information is provided under Section 28 of the Local Government (Rating) Act 2002 as an online representation of our Rating Information Database (RID). The Council Rating Information Database (RID) is freely available to the public at Dunedin City Council, in the same form as is available here. The information presented here is current.

The authoritative source for Certificates of Title is Land Information New Zealand (LINZ). The information provided here is a guide only.

- **[Rating Differential and Land Use](#)**

The Rating differential and land use described herein are the current uses of the rating unit, and not necessarily the District Plan zoning of the property. For all Planning enquiries, please contact the Duty Planner at the Planning Enquiry desk on the 1st floor of the Civic Centre, 50 The Octagon, Dunedin.

For more information about your Privacy, this service and the City of Dunedin website, please see ["Your Privacy & this Site"](#).

This service is provided by the Dunedin City Council as a public service. Use of this service to retrieve Rates information constitutes your awareness, and agreement to the ["Conditions of Use"](#) for this site.

Was this page helpful?

